



# Town of Lansing

## Parks, Recreation & Trails

### Master Plan

Virtual Public Meeting #2  
June 22, 2021, 6:00 pm Via Zoom

A scenic view of a lake with a person on the shore, overlaid with a dark blue rectangle containing yellow text. The background shows a calm blue lake, a dark pebbly beach, and a grassy foreground. In the distance, there are green hills under a blue sky with scattered white clouds. A small figure of a person is visible on the beach. The text is centered and reads "WELCOME & INTRODUCTIONS".

# WELCOME & INTRODUCTIONS

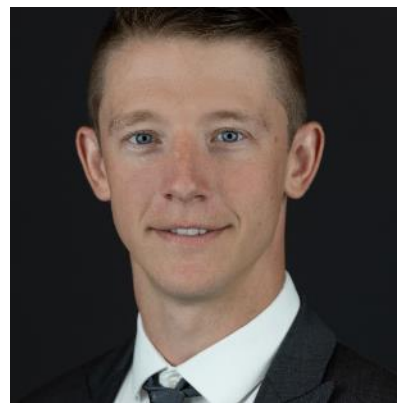


# [CONSULTANT TEAM]



**JACLYN HAKES, AICP**  
PROJECT MANAGER

- 19 years of experience in comprehensive recreational and trail master planning
- Has a knack for bringing technical information down to a level of general understanding



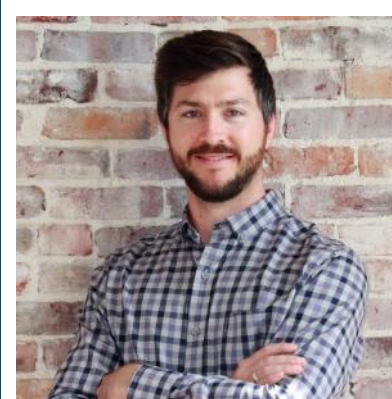
**ANDRIS BLUMBERGS**  
PROJECT PLANNER

- Experience facilitating public discussion at workshops, public events, and open houses
- Leads the implementation of MJ's virtual meetings and web-based engagement activities



**IAN LAW, RLA**  
LANDSCAPE ARCHITECT

- 21 years of experience in community master planning and waterfront revitalization
- Expert in sustainable planning and green infrastructure practices



**JOSIAH SIMPSON**  
ECOLOGICAL DESIGNER

- Extensive experience in ecological design, agricultural planning, green infrastructure and wetland restoration
- Provides expertise on design workshops and charrette management



# [COMMITTEE]



## Parks, Recreation and Trails Advisory Committee

- Community Representatives
  - Katrina Binkewicz
  - Ronny Hardaway
  - Becca Lovenheim
  - Paul Paradine
  - Deborah Trumbull
  - Jack Young
- Town Representatives
  - C.J. Randall, Director of Planning
  - Pat Tyrrell, Lansing Parks and Recreation Supervisor
  - Edward LaVigne, Town Supervisor
  - Jenna Hoellerer, Parks and Recreation
  - Owen Davis, Parks and Recreation





# [AGENDA]



1

PROJECT  
OVERVIEW &  
PROGRESS  
UPDATE

2

DRAFT PARK  
CONCEPT PLANS

3

NEXT STEPS /  
Q & A



# [WEBINAR “HOW TO”]

- There will be several interactive polls during the presentation – please participate!
- We will break to address questions at the end of the presentation
  - To post a question, utilize the “Q & A” function in your Zoom Webinar panel
  - Use the “Raise Hand” feature
    - If on a telephone:
      - \*9 to raise hand
      - \*6 to mute/unmute

- Following the webinar, written comments can be submitted to:

**[www.lansingparksandtrailsplan.com/](http://www.lansingparksandtrailsplan.com/)**

- A recording of the webinar will be posted on the project website.

*Getting to know  
you...*

*Participant Polls*





# PROJECT OVERVIEW & PROGRESS UPDATE



# [PROJECT OVERVIEW]

## What is a Parks, Recreation and Trails Master Plan?

- A roadmap to ensure an appropriate balance of facilities, amenities and programs
- Resources for future development and redevelopment of Town parks, trails and recreational facilities



# [PROJECT APPROACH]

- RE-THINK
- RE-CONNECT
- RE-FOCUS

## RE-THINK

The physical space and programming opportunities



## RE-CONNECT

Physically within the park; visually to the waterfront; and programmatically for the community

## RE-FOCUS

Activities within each park to maximize the space and focus on the pedestrian realm



# PROJECT TASKS

- **Task 1:** Review Existing Data & Plans
- **Task 2:** Inventory Existing Facilities
- **Task 3:** Committee Meetings
- **Task 4:** Manage Public Engagement
- **Task 5:** Analyze Needs & Trends
- **Task 6:** Public Workshop
- **Task 7:** Draft Master Plan
- **Task 8:** Implementation Strategy

Project Tasks	OCT-2020	NOV-2020	DEC-2020	JAN-2021	FEB-2021	MAR-2021	APR-2021	MAY-2021	JUN-2021	JULY-2021	AUG-2021	SEPT-2021
Task 1												
Task 2												
Task 3	■		■	■		■	■	■		■		■
Task 4												
Task 5												
Task 6												
Task 7												
Task 8												

- Advisory Committee Meetings
- ▲ Advisory Committee Virtual Tour
- ◆ Public Workshop
- Stakeholder Interviews
- △ Board Presentations of Final Plan

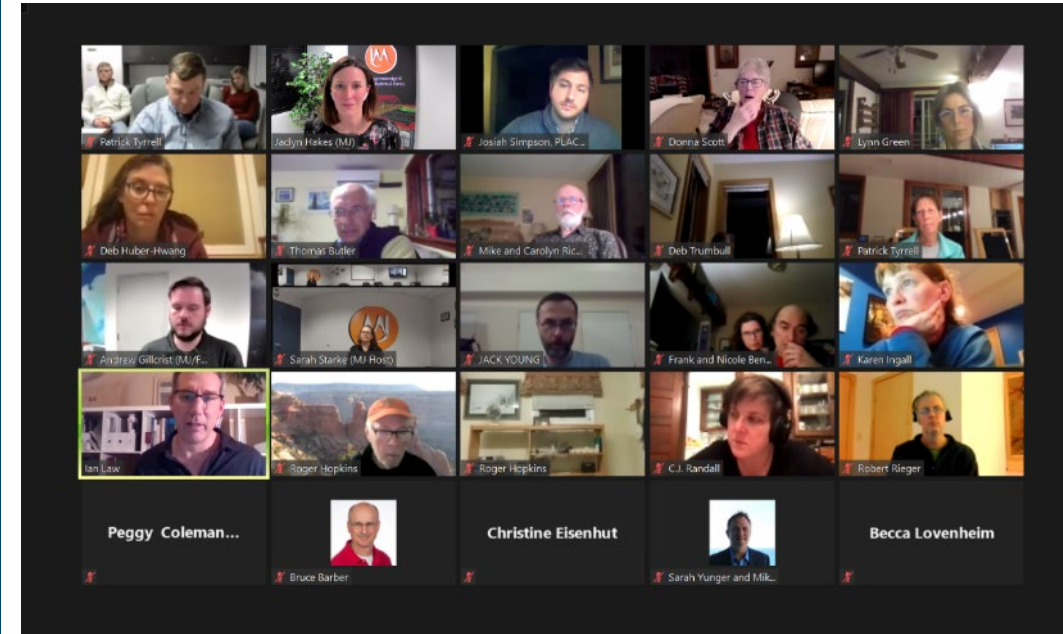
- ◡ Pop-Up Tables
- Community Walk and Talk
- ↓ Online Survey

*\* This schedule may be modified.*

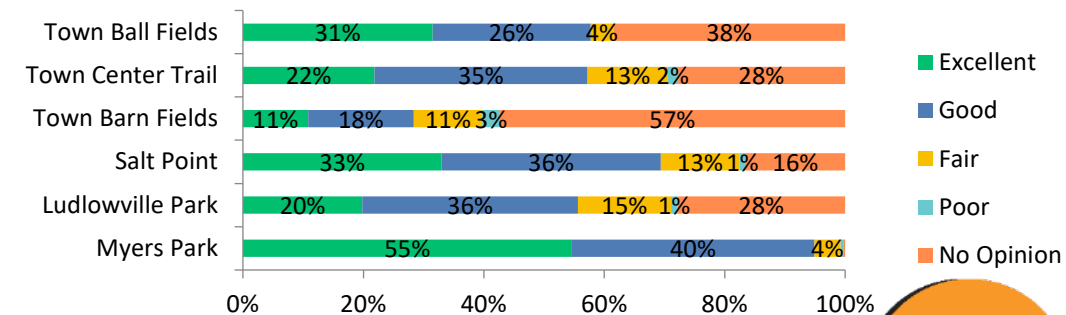


# PUBLIC ENGAGEMENT

- **Community Survey**
  - October – December 2020
- **Virtual Public Workshop #1**
  - February 25, 2021
- **Stakeholder Meetings**
  - March 4-8, 2021



Q14. Overall, how would you rate the physical condition of Lansing Town parks grounds, facilities and fields?



# [ONLINE SURVEY]

- Online through Survey Monkey
- Live from October 2, 2020 to December 18, 2020
- Total of 445 responses
- Topic Areas
  - Participant Information
  - Use
  - Facilities
  - Program Experience
  - Park Specific
  - Suggestions for the Future

## Town of Lansing Parks, Recreation and Trails Master Plan Community Survey



Be part of the Town of Lansing Parks, Recreation and Trails Master Plan. We need your input!

Go to this link and take the survey:

[www.research.net/r/LansingParks](http://www.research.net/r/LansingParks)

For more information contact:

Patrick Tyrrell, Parks and Recreation Supervisor | Phone: 607-533-7388 | [www.lansingrec.com](http://www.lansingrec.com)

Scan the QR code  
to access the  
survey on your  
mobile device



# [PUBLIC WORKSHOP #1]

- Thursday, February 25, 2021
- Via Zoom Webinar
- Virtual break-out discussions focused on each park
- Approximately 60 pre-registered and 40 participated

Town of Lansing Parks, Recreation and Trails Master Plan

## Virtual Public Workshop #1



Be part of the Town of Lansing Parks, Recreation and Trails Master Plan. We need your input!

**Thursday, February 25, 2021**  
**6:00 PM – 8:00 PM, Via Zoom**

**Participate in a  
Virtual Public  
Workshop!**

The Town of Lansing invites community members and stakeholders to participate in a Virtual Public Workshop to gather input related to needs and opportunities concerning Lansing parks, recreation, trails and programs.

**Registration Required**

To register visit:

[www.LansingParksAndTrailsPlan.com](http://www.LansingParksAndTrailsPlan.com)

The Town of Lansing Parks, Recreation and Trails Master Plan will create a roadmap to ensure an appropriate balance of facilities, amenities and programs throughout the Town. The plan will be used as a resource for the future development of the Town's parks, trails and recreation system.

For more information contact:

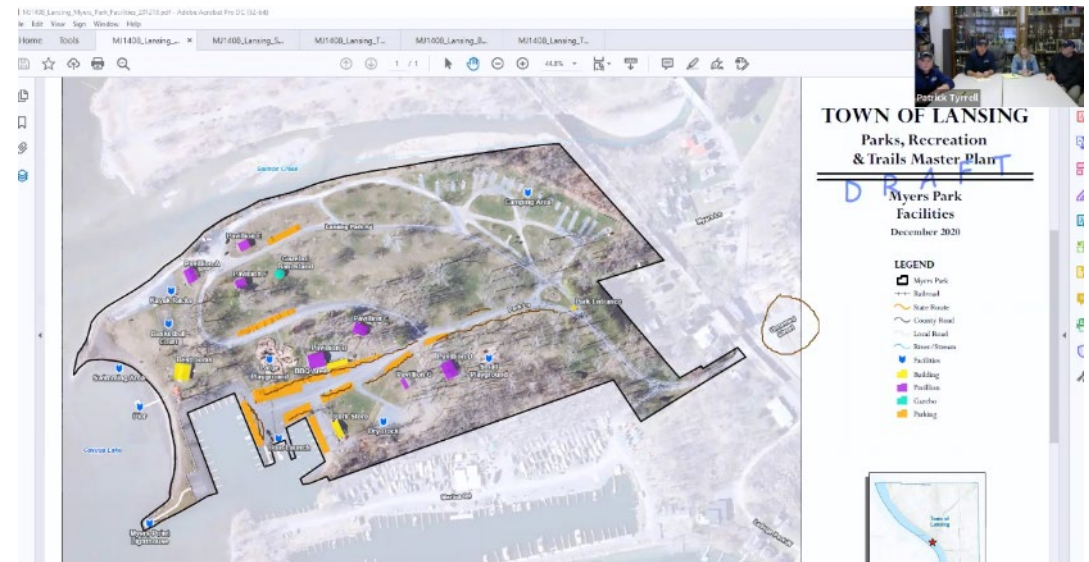
Patrick Tyrrell, Parks and Recreation Supervisor | Phone: 607-533-7388

[www.LansingParksAndTrailsPlan.com](http://www.LansingParksAndTrailsPlan.com)



# [STAKEHOLDER MEETINGS]

- Six topic-based stakeholder meetings
  - March 4<sup>th</sup>-8<sup>th</sup>, 2021
- Over 20 stakeholders interviewed to date
- Opportunities for collaboration and networking



# [STAKEHOLDER MEETINGS]

- **Stakeholder Topics**
  - Parks staff
  - Parks, Recreation and Trails Maintenance and Programs
  - Regional Partners
  - Recreation Groups
  - Tourism and Business
  - Education and Non-profit







# DRAFT PARK CONCEPT PLANS

# [DRAFT CONCEPT PLANS]

## Concept Plan Development

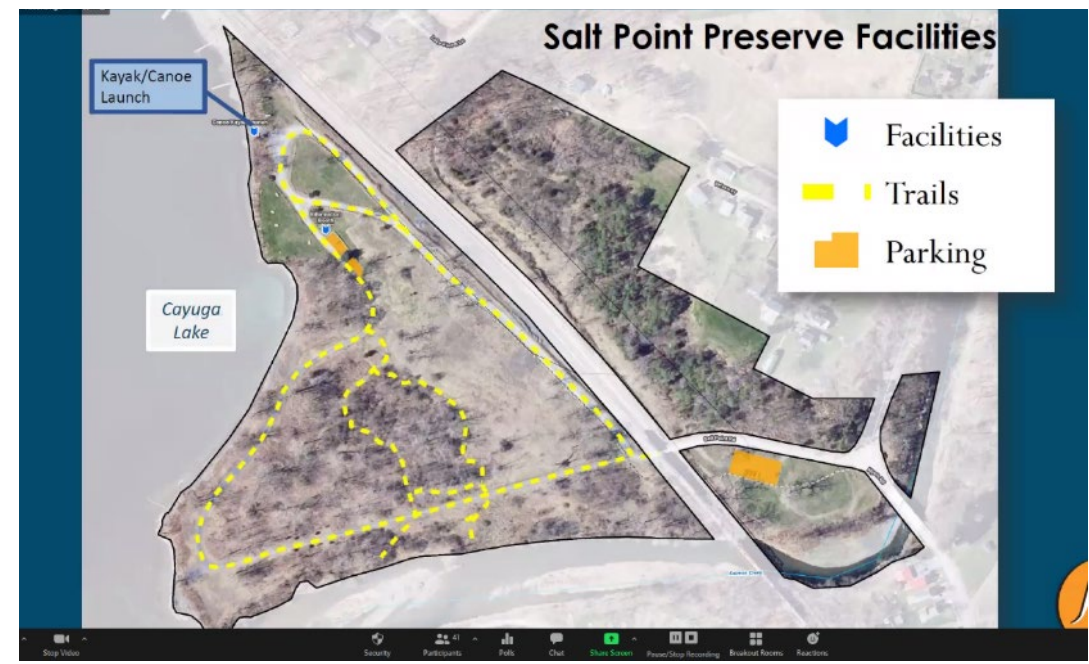
- Understanding Existing Conditions / Needs
- Staff input
- Public Input
  - Online Survey
  - Public Workshop #1
- Stakeholder Input
- Committee Guidance



# [COMMON THEMES]

## Public Workshop #1

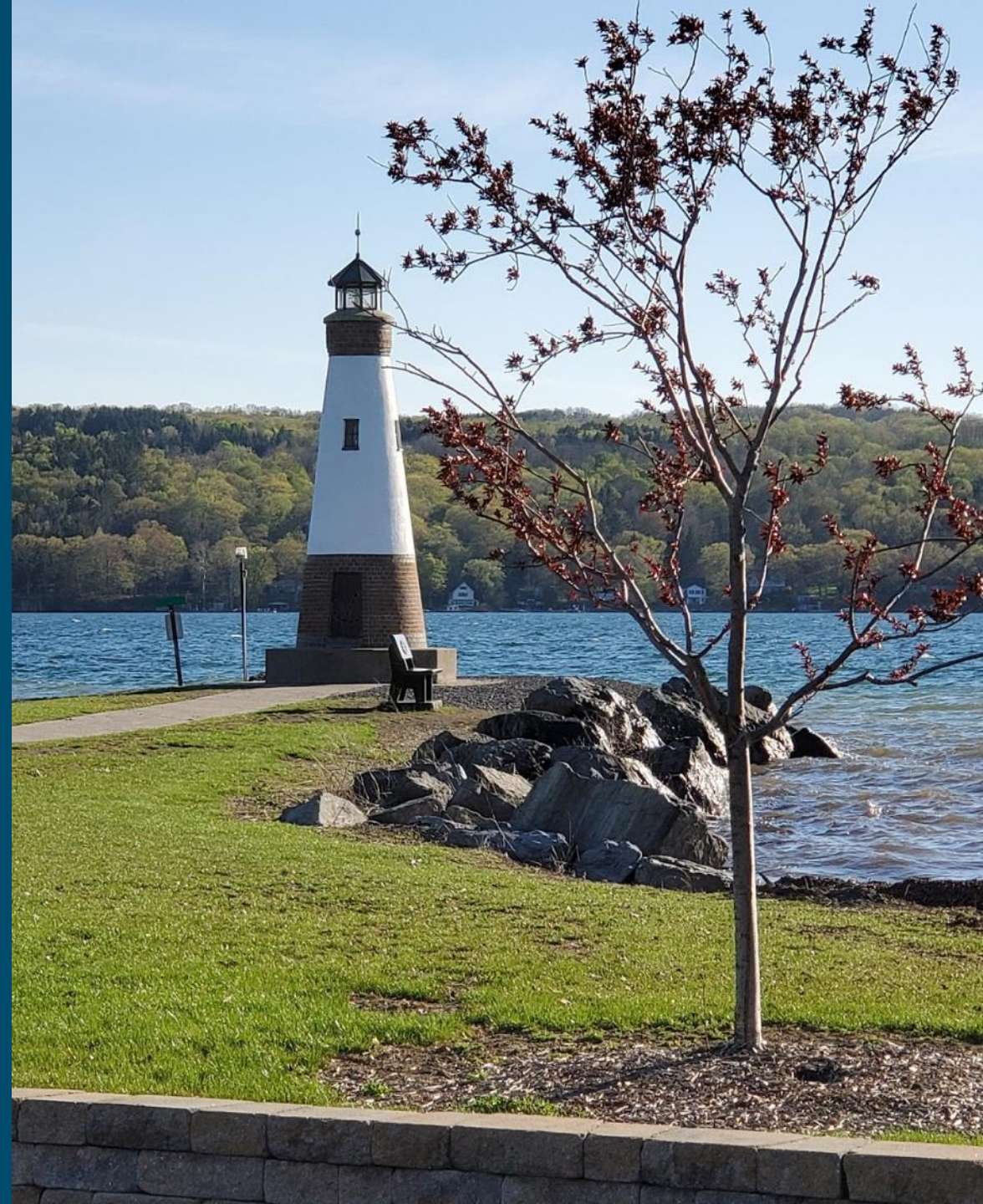
- Connectivity
- Pedestrian and bicycle amenities
- Parking and restrooms
- Need for additional community/recreation spaces



# [COMMON THEMES]

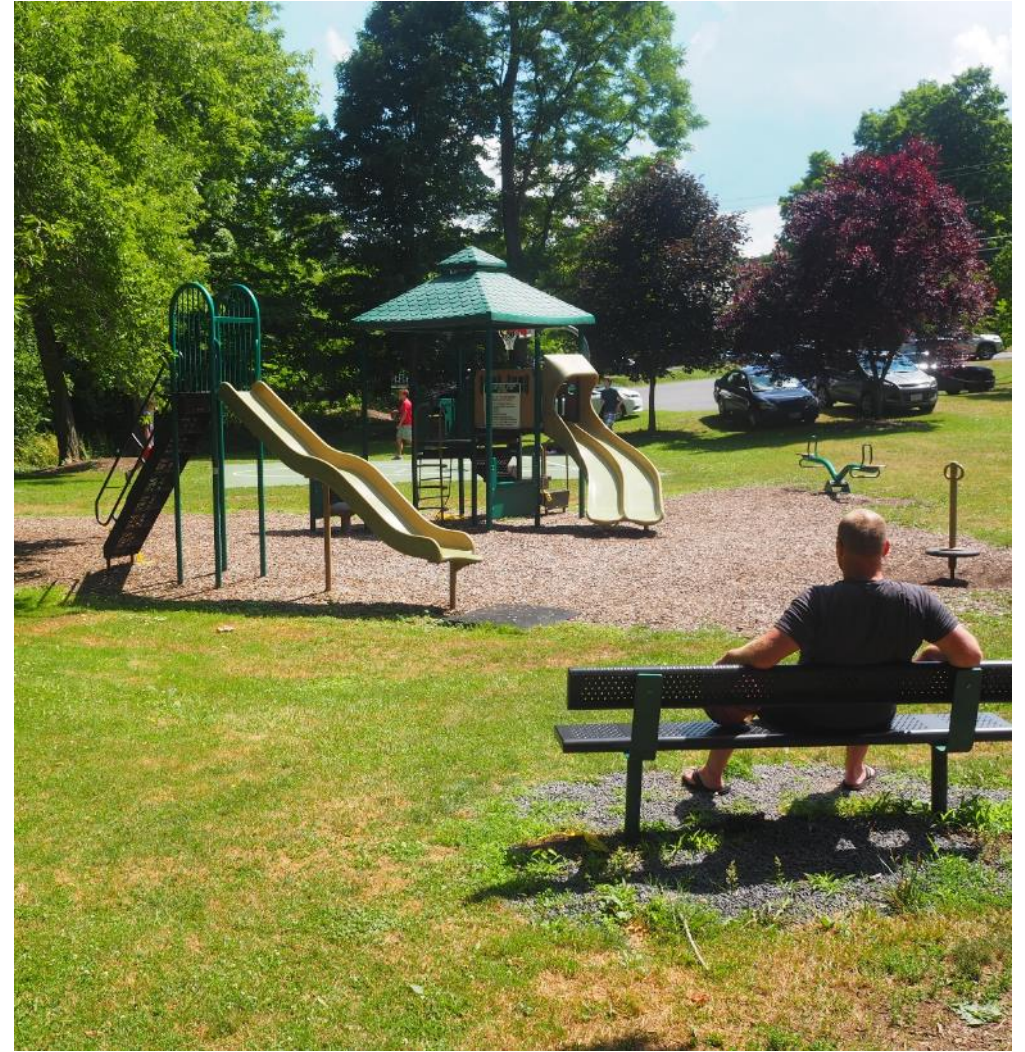
## Stakeholder meetings

- Need for additional community gathering spaces
- Better connectivity
- Parking and restrooms
- Need for additional park staff
- Pedestrian improvements
- Confirmation of needs expressed by public



# [PARK CONCEPT PLANS]

- Ball Fields
- Ludlowville Park
- Myers Park
- Salt Point Preserve
- Lansing Center Trail
- Barn Fields



# [PARK CONCEPT PLANS]

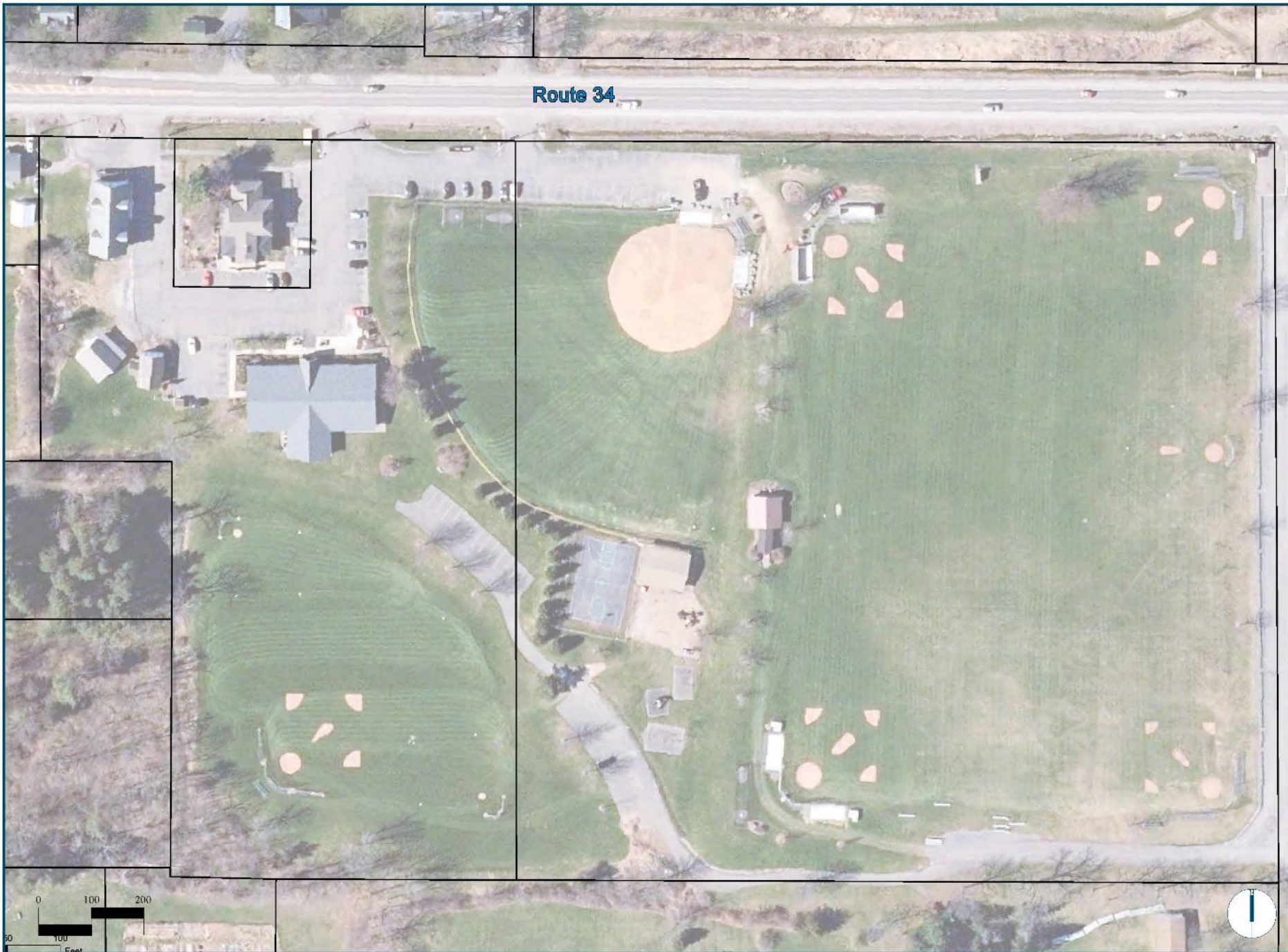
- Key Design Principles
- Existing Site Info
- Draft Concept Plan
- Interactive Participant Polls



# [BALL FIELDS]

- **Design Principles**
  - Parking
  - Pedestrian circulation
  - Connections





# Town Ball Fields

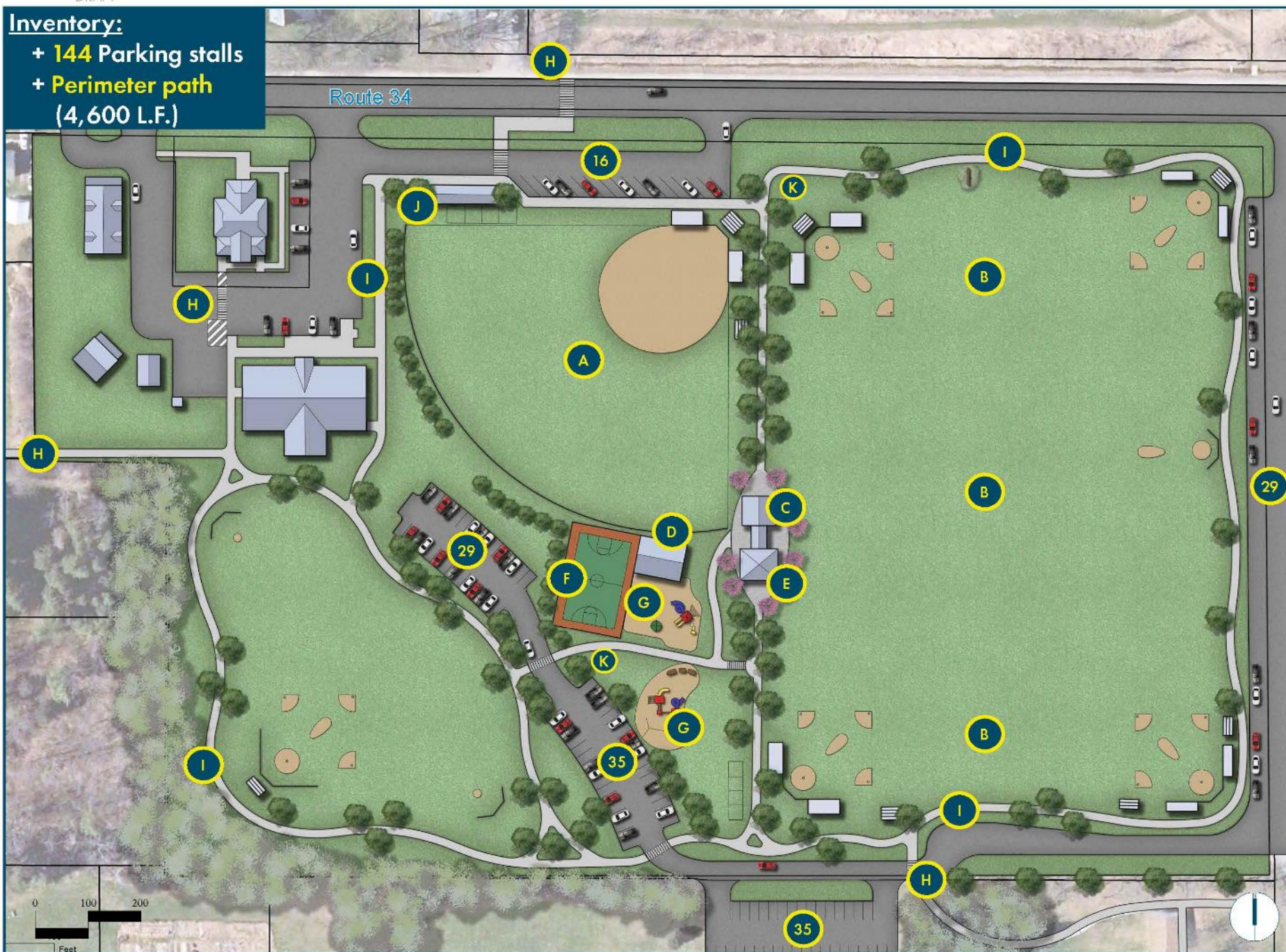
## Inventory:

- + 102 Parking Stalls
- + 1 Adult Softball Field
- + 6 Little League Fields
- + 2 T-Ball Fields
- + 1 Bathroom
- + 1 Pavilion
- + 1 Basketball Court
- + Several Play Structures
- + BBQ Station



### Inventory:

- + 144 Parking stalls
- + Perimeter path (4,600 L.F.)



# Town Ball Fields

## Legend

- (A) Adult Softball Field
- (B) Sports Fields (little league, soccer, football)
- (C) Bathrooms
- (D) Existing Pavilion
- (E) Concession Stand
- (F) Basketball Court
- (G) Play Structures
- (H) New Pedestrian Connections
- (I) Perimeter Path
- (J) BBQ Station
- (K) Bike Racks

***What do you think?***

***Participant Polls***



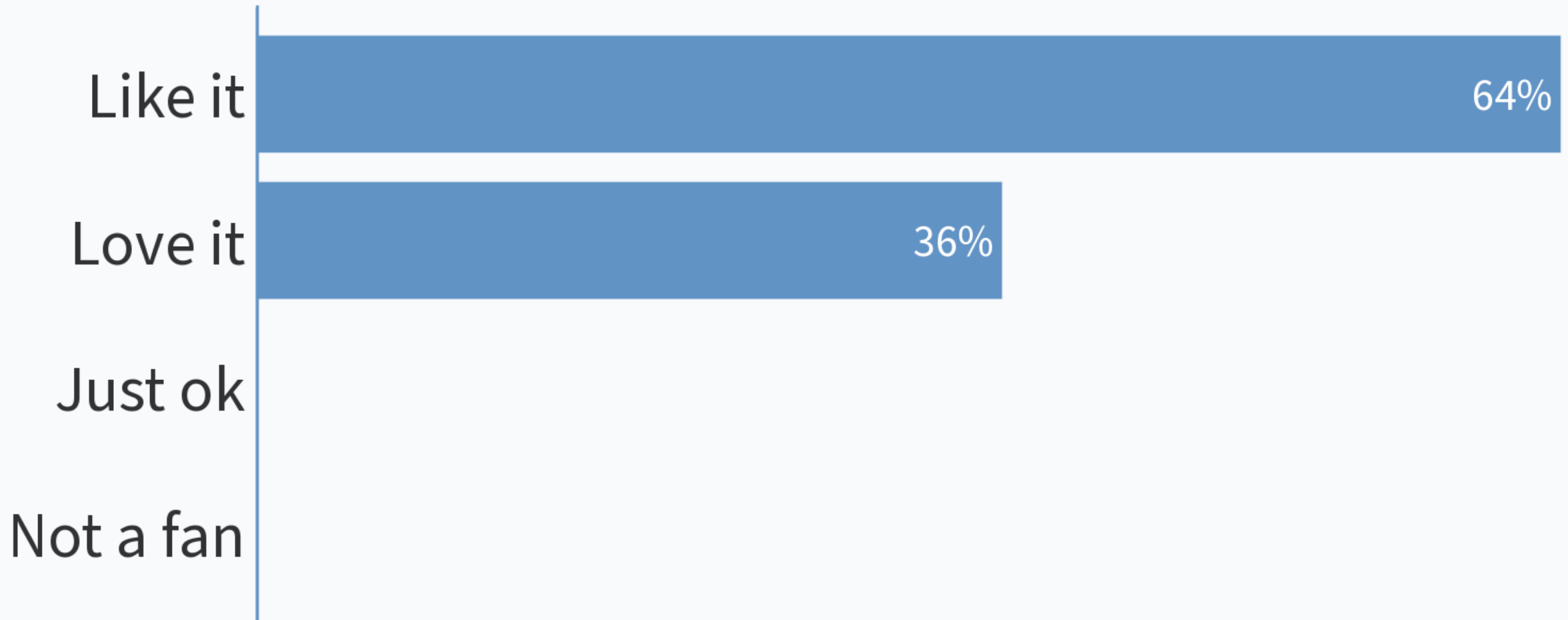
- Please go to [pollev.com/mjplanning518](https://pollev.com/mjplanning518)
- Text **37607** with the message **MJPlanning518**
- Take photo of QR code below



When poll is active, respond at [pollev.com/mjplanning518](https://pollev.com/mjplanning518)

Text **MJPLANNING518** to **37607** once to join

## What do you think of the Ball Fields concept plan?



Which elements of the Ball Fields concept plan do you like best?



When poll is active, respond at [pollev.com/mjplanning518](https://pollev.com/mjplanning518)

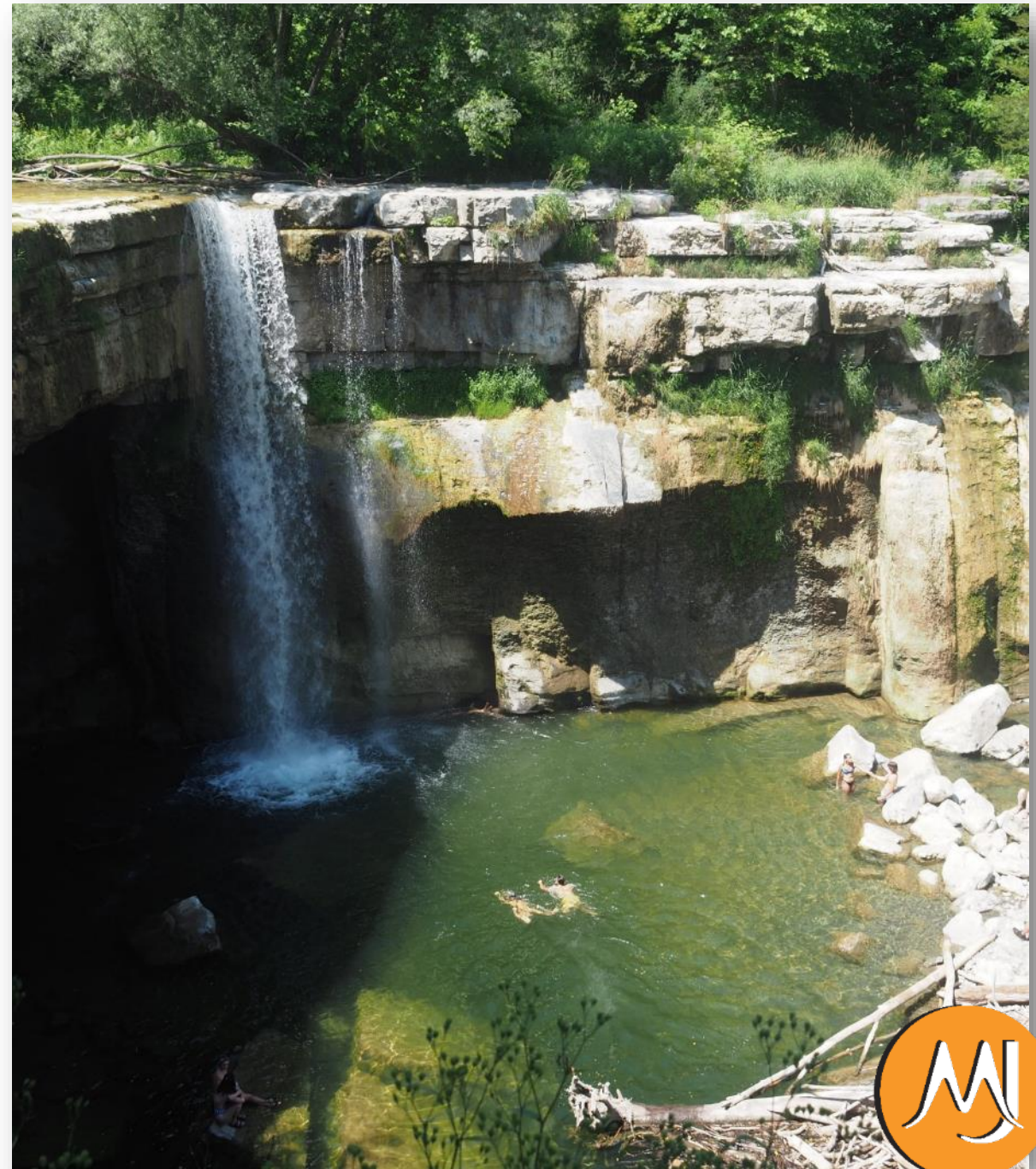
Text **MJPLANNING518** to **37607** once to join

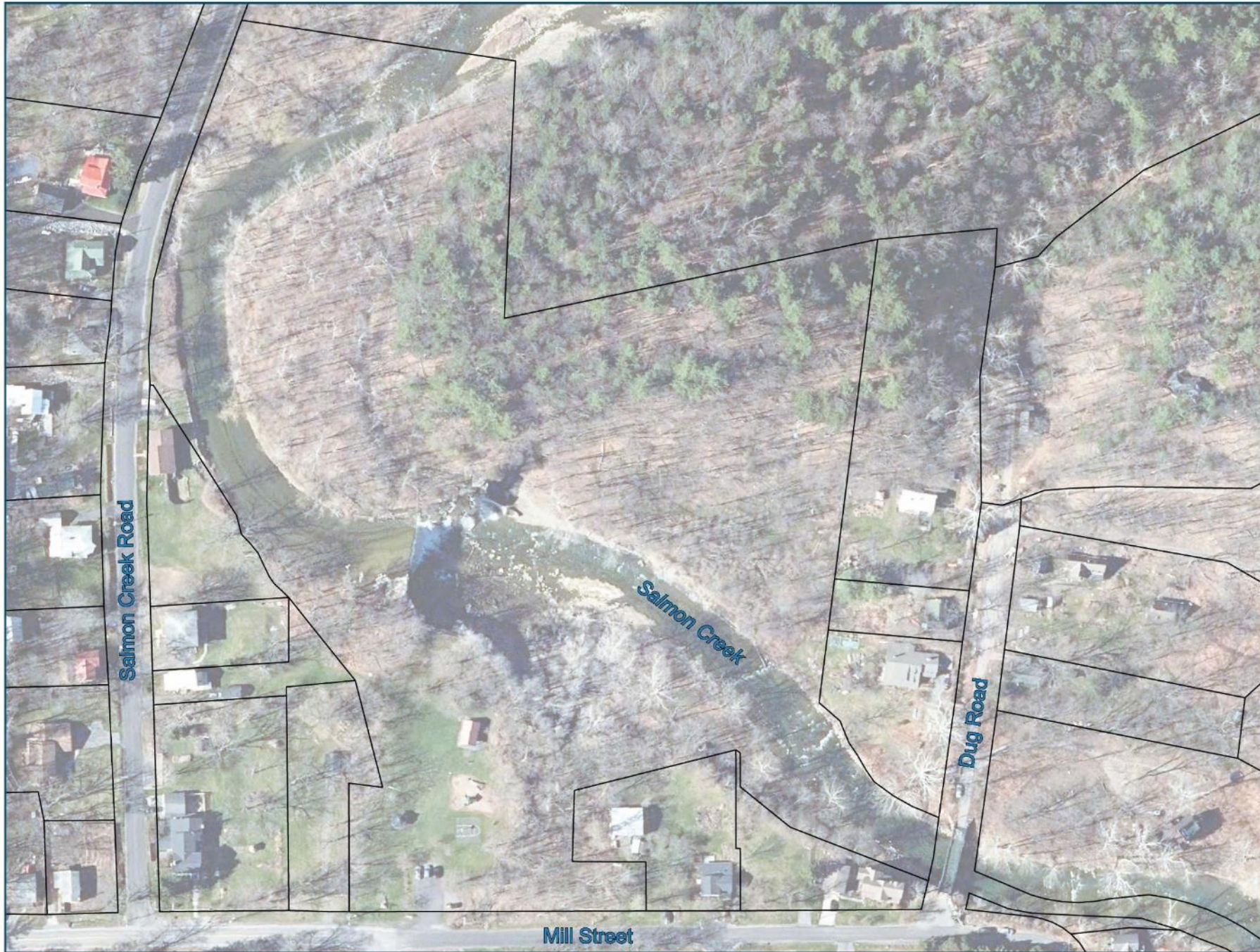
# What other elements would you like to see at the Ball Fields?



# [LUDLOWVILLE PARK]

- **Design Principles**
  - Parking
  - Restrooms
  - Safer access to falls
  - Maintain quiet character and scale of park





## Ludlowville Park

### Inventory:

- + 13-acre park
- + Gazebo
- + Basketball court
- + Playground
- + Pavilion
- + Parking (5 stalls)
- + Waterfall





**Inventory:**  
+ 10 parking stalls

# Ludlowville Park

## Legend

- (A)** Bathroom
- (B)** Expanded parking area
- (C)** Pedestrian path
- (D)** Accessible overlook
- (E)** Formalized trail to waterfall
- (F)** Explore opportunities to utilize north part of property
- (G)** Explore opportunities for neighborhood connections

*What do you  
think?*

*Participant Polls*



- Please go to [pollev.com/mjplanning518](https://pollev.com/mjplanning518)
- Text **37607** with the message **MJPlanning518**
- Take photo of QR code below



When poll is active, respond at [pollev.com/mjplanning518](https://pollev.com/mjplanning518)

Text **MJPLANNING518** to **37607** once to join

## What do you think of the Ludlowville Park concept plan?



When poll is active, respond at [pollev.com/mjplanning518](https://pollev.com/mjplanning518)

Text **MJPLANNING518** to **37607** once to join

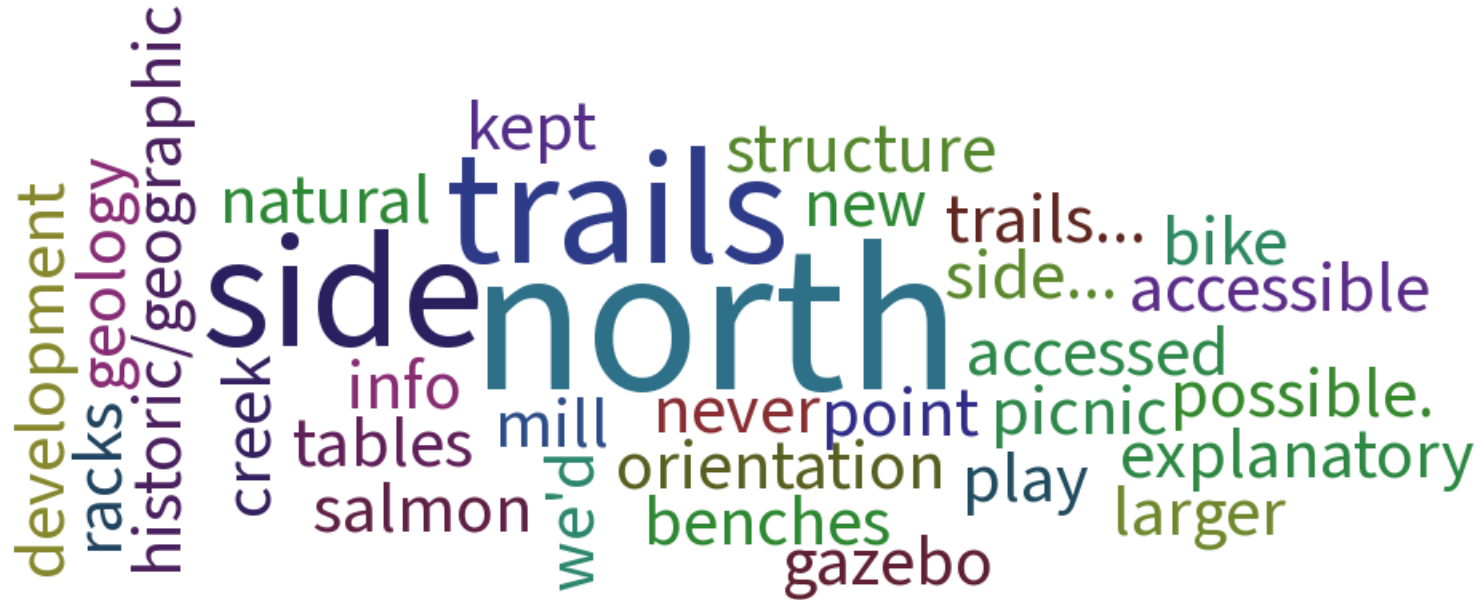
# Which elements of the Ludlowville Park concept plan do you like best?



When poll is active, respond at [pollev.com/mjplanning518](https://pollev.com/mjplanning518)

Text **MJPLANNING518** to **37607** once to join

# What other elements would you like to see at Ludlowville Park?

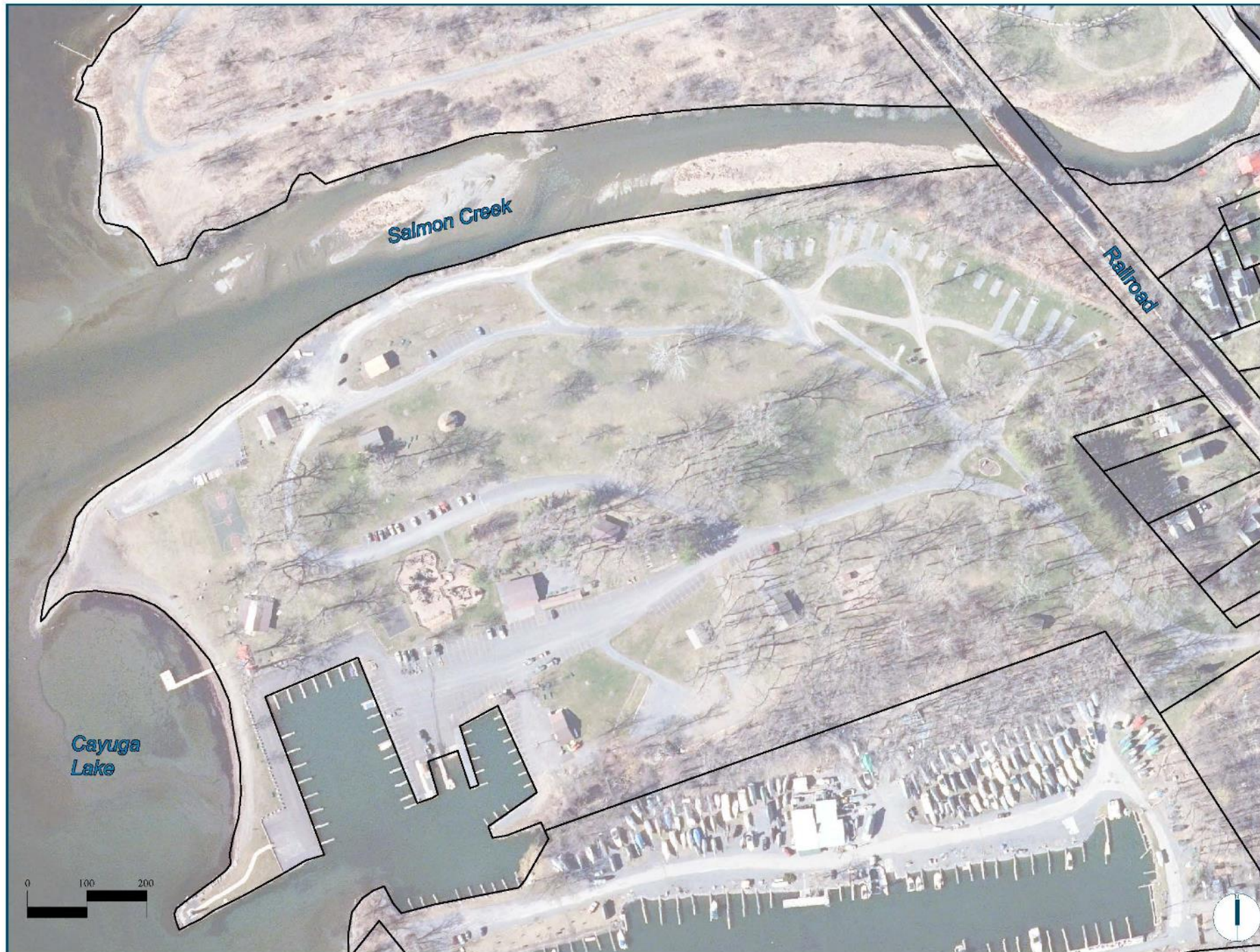


# [MYERS PARK]

- **Design Principles**
  - Parking (car & trailer)
  - Pedestrian circulation
  - Enhance views / access to lake
  - Restrooms
  - Create more defined spaces



# Myers Park



## Inventory:

- + 180 Parking Stalls
- + 15 Boat Trailer Stalls
- + 19 RV Campsites
- + 4,150 L.F. of Lake Front
- + 950 L.F. of Lake Front without Cars
- + Bathrooms with Showers
- + 7 Pavilions
- + 1 Gazebo
- + Basketball Court
- + Volleyball Net
- + Kayak Racks
- + 1 Dock



# Myers Park

## Legend

- (A) RV Campsites
- (B) RV Bathrooms with Showers
- (C) New Bathrooms
- (D) Existing Pavilion
- (E) Moved Pavilion
- (F) Gazebo
- (G) Expanded Beach
- (H) Basketball Court
- (I) Volleyball Court
- (J) Kayak Facility
- (K) Canoe/Kayak Drop Off
- (L) Canoe/Kayak Launch
- (M) High Tensile Structure
- (N) Riverbank Plantings
- (O) Lakefront-Marina Promenade
- (P) Open Lawn
- (Q) Event Lawn
- (R) Boat Launch
- (S) Playground
- (T) Campsites
- (U) Bike Racks

- Inventory:**
- + 193 Parking stalls
  - + 75 Boat trailer stalls
  - + 19 RV campsites
  - + 3,630 L.F. of lake front without cars
  - + 5 Campsites



High Tensile Structures (Myers Park, 'M')

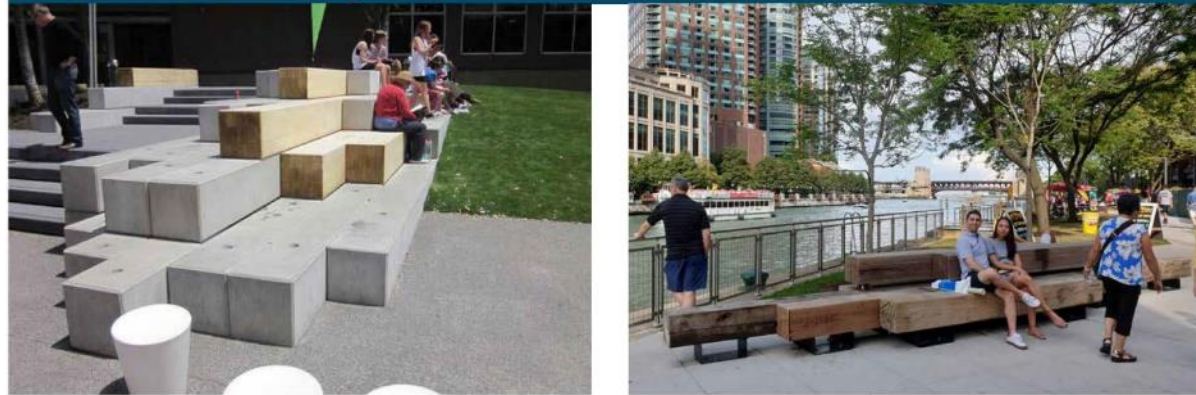


DRAFT

# Proposed Park Amenities

## Conceptual Precedents

Creative Seating (Myers Park, Lakefront Promenade 'O')



Trellis Swings (Myers Park, Lakefront Promenade 'O')



Pavilion Carts (Myers Park)



*What do you  
think?*

*Participant Polls*



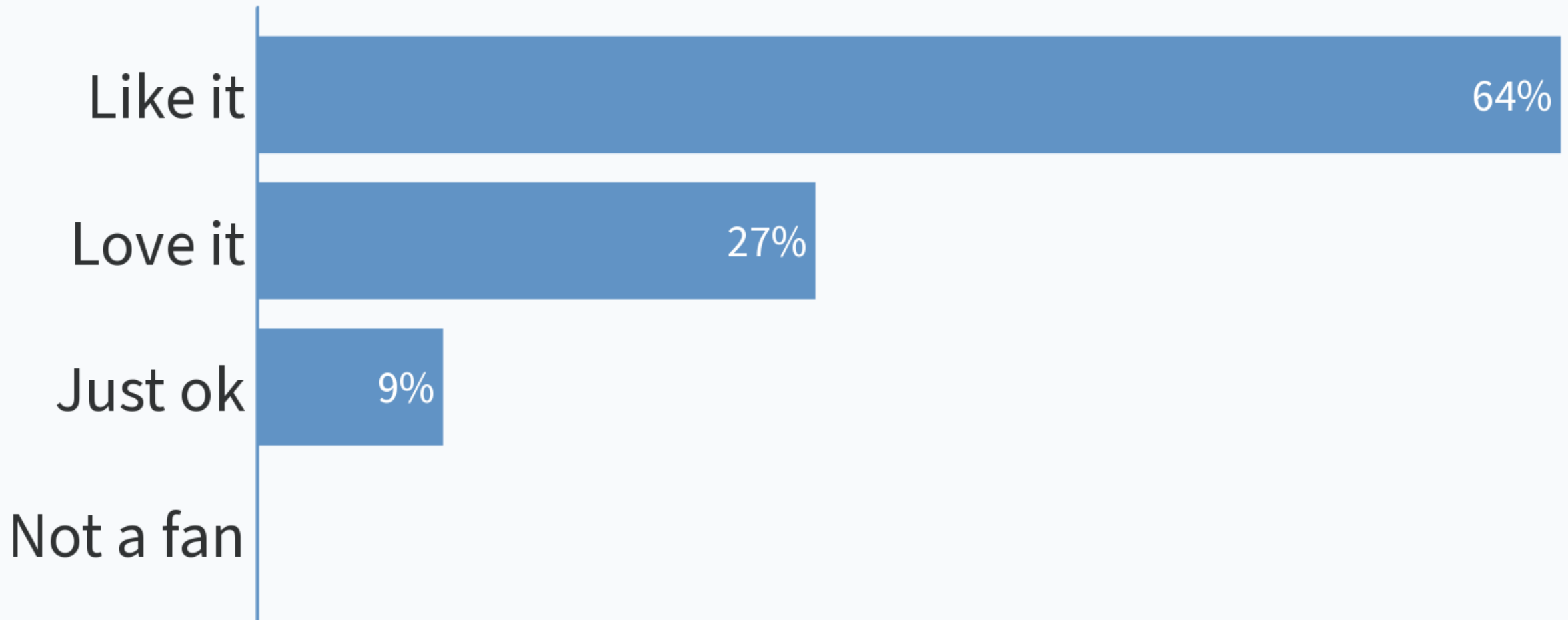
- Please go to [pollev.com/mjplanning518](https://pollev.com/mjplanning518)
- Text **37607** with the message **MJPlanning518**
- Take photo of QR code below



When poll is active, respond at [pollev.com/mjplanning518](https://pollev.com/mjplanning518)

Text **MJPLANNING518** to **37607** once to join

## What do you think of the Myers Park concept plan?

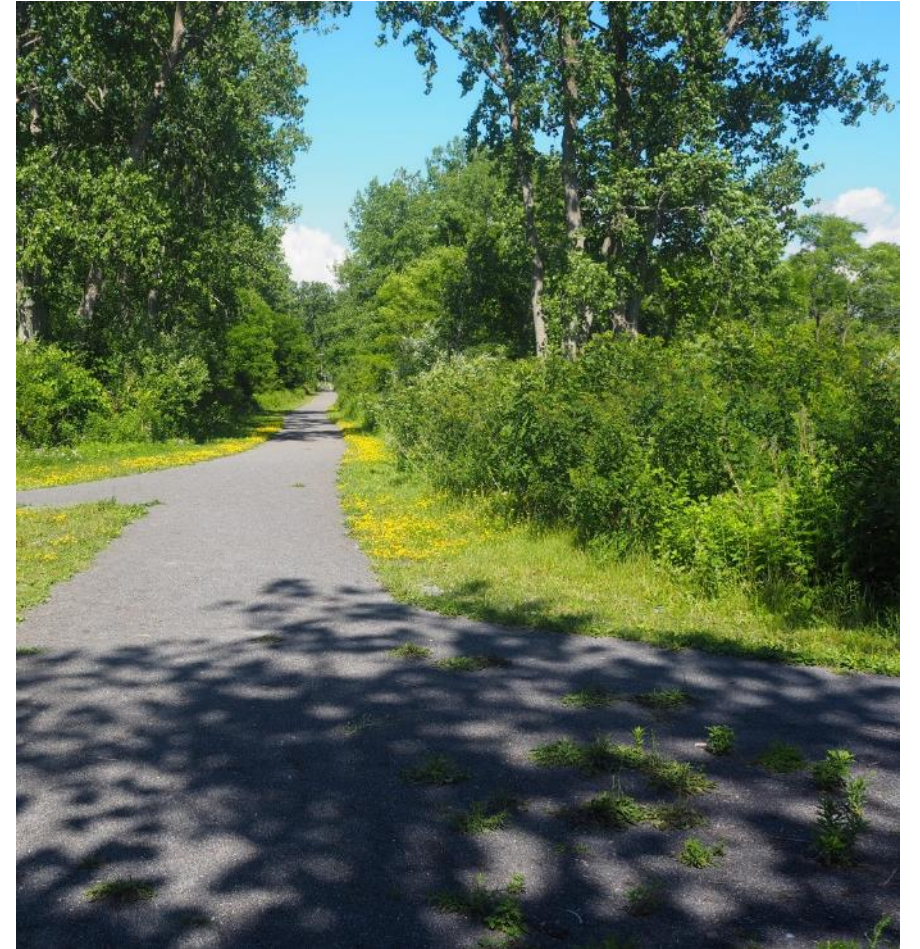






# [SALT POINT PRESERVE]

- **Design Principles**
  - Maintain 'preserve' character
  - Improve lake access & viewing points
  - Define parking







## Salt Point Natural Area

### Inventory:

- + 10 Parking stalls
- + 20 Make-shift parking stalls
- + 14 Creek access parking stalls
- + 1 Port-a-John bathroom
- + 2,200 L.F. Stone dust walking trails
- + Information kiosk
- + Non-motorized boat put-in



## Salt Point Natural Area

### Legend

- (A) 2 Port-a-John bathroom shelters
- (B) Information Kiosk
- (C) Improved Lake Access
- (D) Improved Lake Viewing/Swimming
- (E) Improved Creek Viewing/Access
- (F) Bike Racks

# Proposed Park Amenities

Conceptual  
Precedents

Guardrails (Salt Point)



*What do you  
think?*

*Participant Polls*



- Please go to [pollev.com/mjplanning518](https://pollev.com/mjplanning518)
- Text **37607** with the message **MJPlanning518**
- Take photo of QR code below



When poll is active, respond at [pollev.com/mjplanning518](https://pollev.com/mjplanning518)

Text **MJPLANNING518** to **37607** once to join

## What do you think of the Salt Point Preserve concept plan?



When poll is active, respond at [pollev.com/mjplanning518](https://pollev.com/mjplanning518)

Text **MJPLANNING518** to **37607** once to join

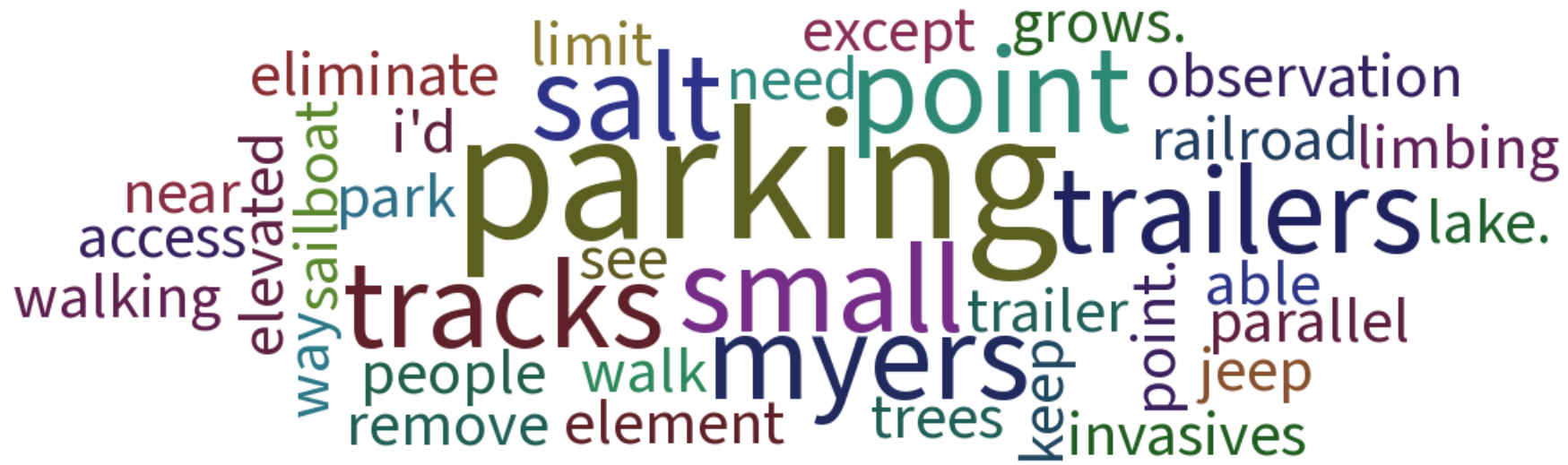
# Which elements of the Salt Point Preserve concept plan do you like best?



When poll is active, respond at [pollev.com/mjplanning518](https://pollev.com/mjplanning518)

Text **MJPLANNING518** to **37607** once to join

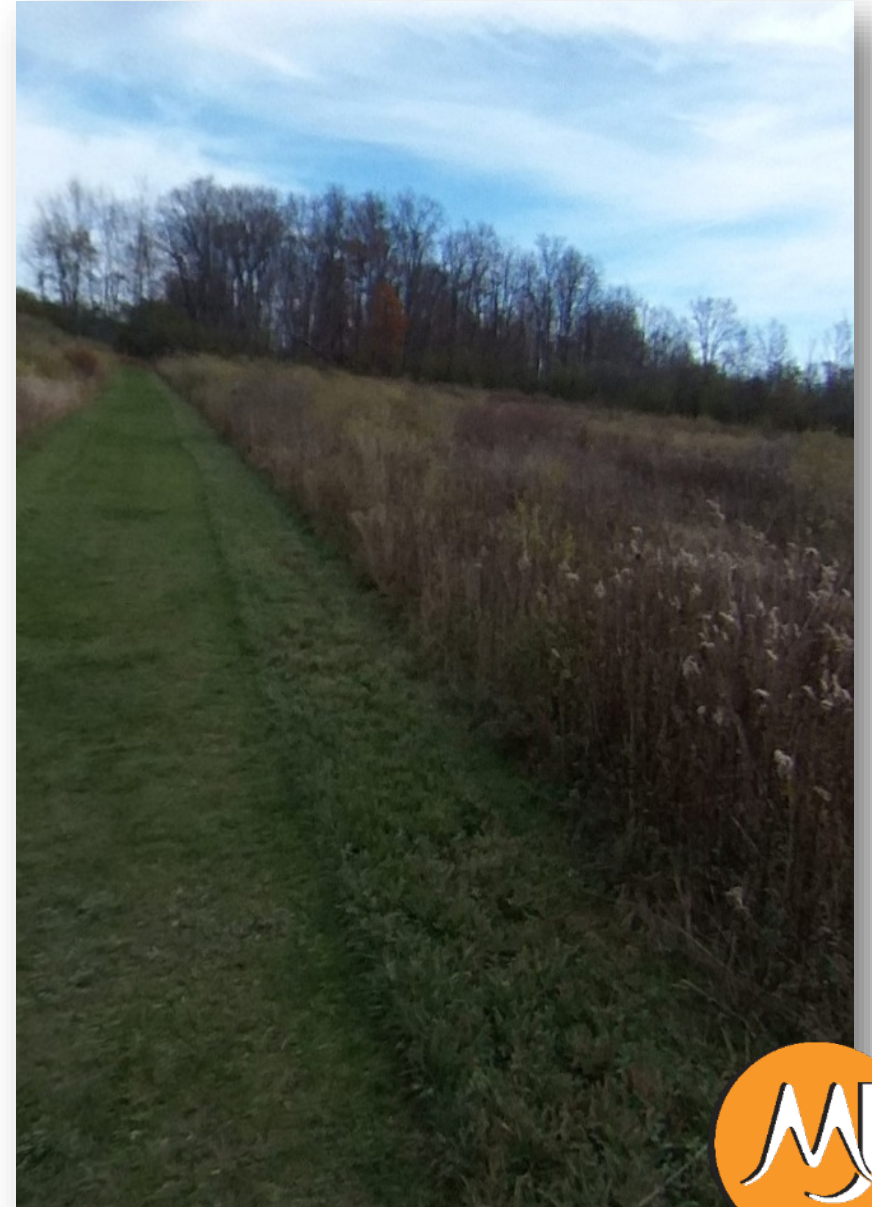
# What other elements would you like to see at Salt Point Preserve?





# [LANSING CENTER TRAIL]

- **Design Principles**
  - Parking
  - Restrooms
  - Interpretive signage



# Lansing Center Trail

## Inventory:

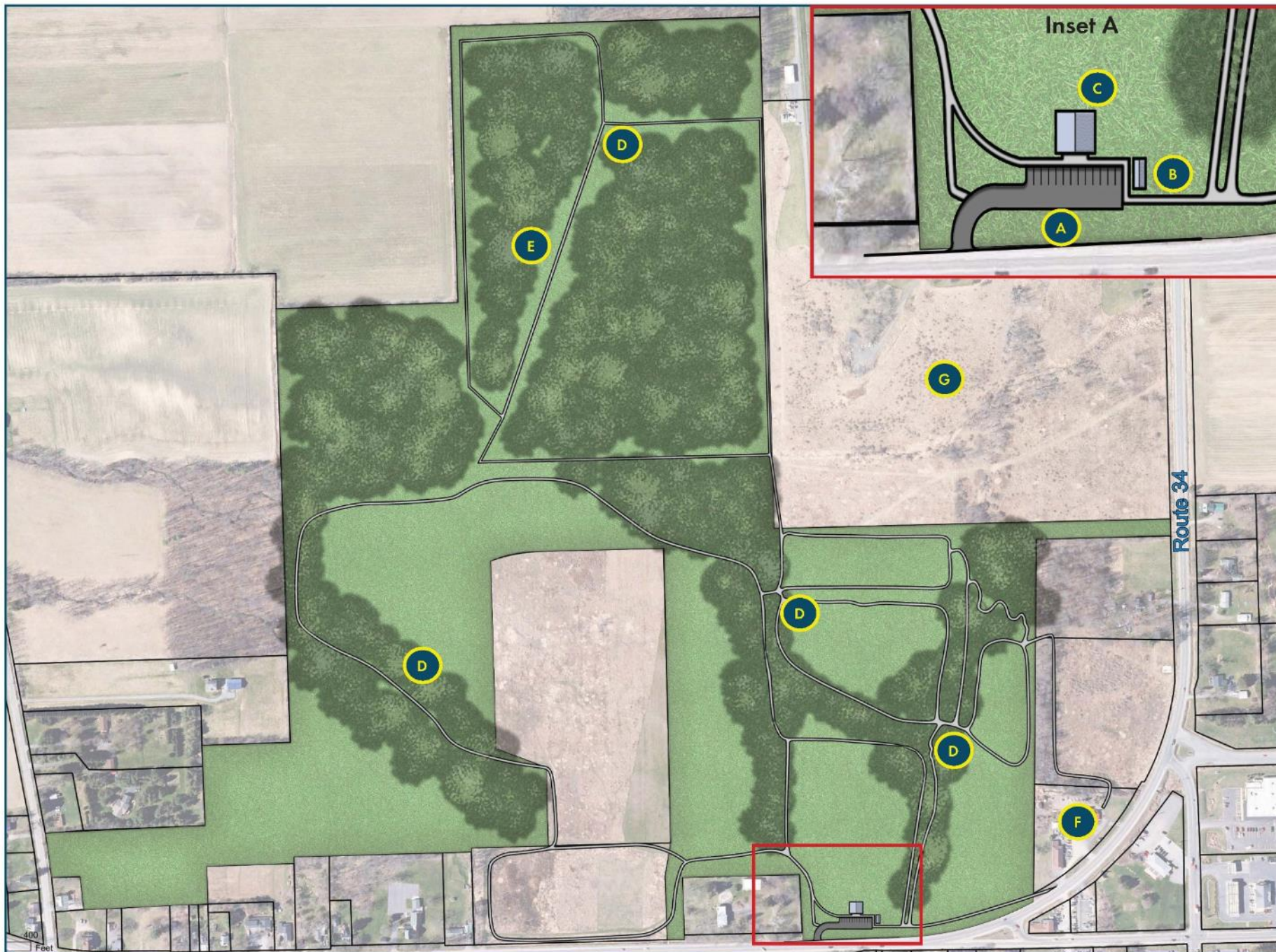
- + 4 miles of trails
- + Gravel parking area
- + Kiosk
- + Port-a-John



# Lansing Center Trail

## Legend

- (A) Formalized parking area
- (B) Kiosk
- (C) Bathroom
- (D) Interpretive signage
- (E) Address drainage for wet trails
- (F) Explore opportunities for additional parking
- (G) Explore opportunities for trail expansion



*What do you  
think?*

*Participant Polls*



- Please go to [pollev.com/mjplanning518](https://pollev.com/mjplanning518)
- Text **37607** with the message **MJPlanning518**
- Take photo of QR code below



When poll is active, respond at [pollev.com/mjplanning518](https://pollev.com/mjplanning518)

Text **MJPLANNING518** to **37607** once to join

# What do you think of the Lansing Center Trail concept plan?



When poll is active, respond at [pollev.com/mjplanning518](https://pollev.com/mjplanning518)

Text **MJPLANNING518** to **37607** once to join

# Which elements of the Lansing Center Trail concept plan do you like best?







# [BARN FIELDS]

- **Design Principles**
  - Parking
  - Restrooms
  - Pedestrian safety
  - Opportunities for use as flex space
  - Protective fencing
  - Additional recreation amenities



## Town Barn Field

### Inventory:

- + No formalized parking
- + 3 baseball fields
- + 1 soccer field



**Inventory:**  
+ 42 Parking stalls



## Town Barn Field

### Legend

- (A) Formalized parking area
- (B) Crosswalk
- (C) Pedestrian path
- (D) Bathroom
- (E) Playground
- (F) Picnic area
- (G) Pavilion
- (H) Protective fence
- (I) Vegetative buffer
- (J) Address drainage and regrade field

*What do you  
think?*

*Participant Polls*



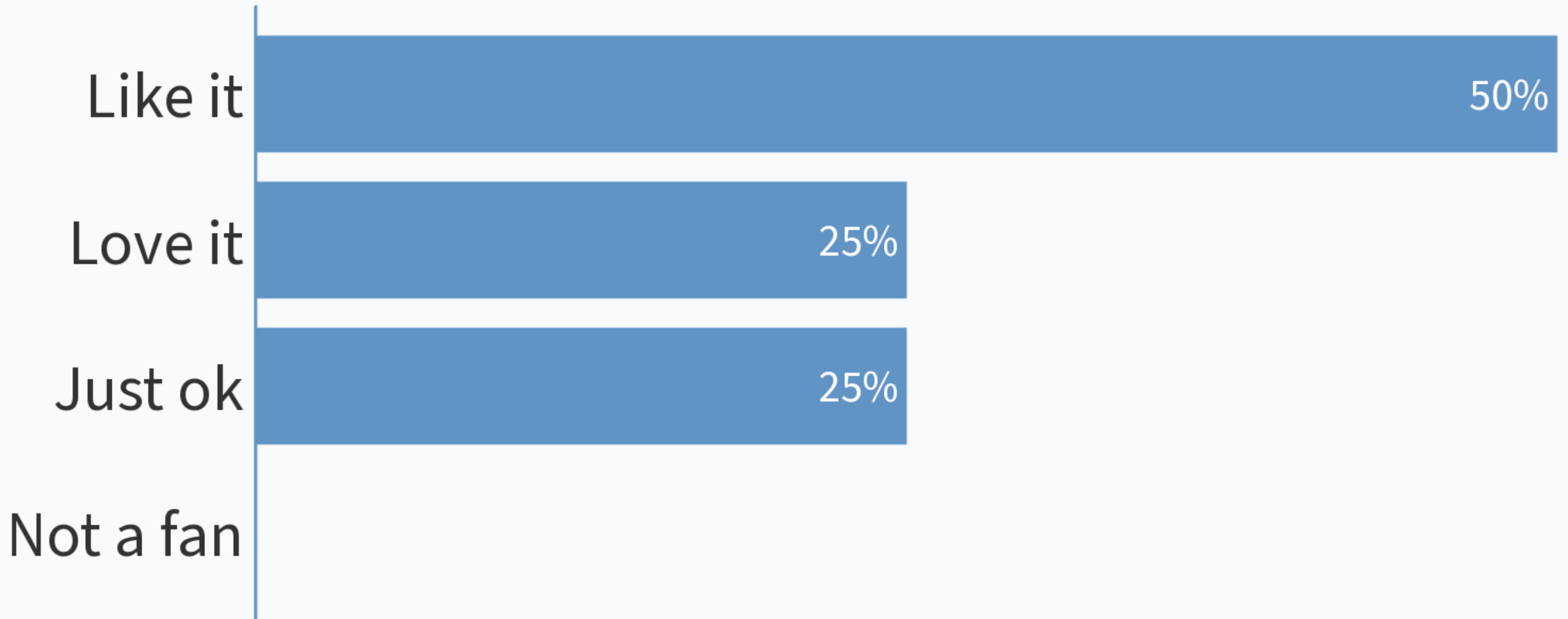
- Please go to [pollev.com/mjplanning518](https://pollev.com/mjplanning518)
- Text **37607** with the message **MJPlanning518**
- Take photo of QR code below



When poll is active, respond at [pollev.com/mjplanning518](https://pollev.com/mjplanning518)

Text **MJPLANNING518** to **37607** once to join

## What do you think of the Town Barn Fields concept plan?











# NEXT STEPS / Q & A

# [NEXT STEPS]

- Summarize public input
- Refine Concept Plans
- Prepare Preliminary Cost Estimates
- Prepare Draft Master Plan

[www.LansingParksandTrailsPlan.com](http://www.LansingParksandTrailsPlan.com)



# [WEBINAR “HOW TO”]

- To post a question, utilize the “Q & A” function in your Zoom Webinar panel
- Use the “Raise Hand” feature
  - If on a telephone:
    - \*9 to raise hand
    - \*6 to mute/unmute

- Following the webinar, written comments can be submitted to:

[www.lansingparksandtrailsplan.com/](http://www.lansingparksandtrailsplan.com/)

- A recording of the webinar will be posted on the project website.